



# GAT MONTHLY MEMBERSHIP PROGRESS REPORT

Results as of: 1/31/2022

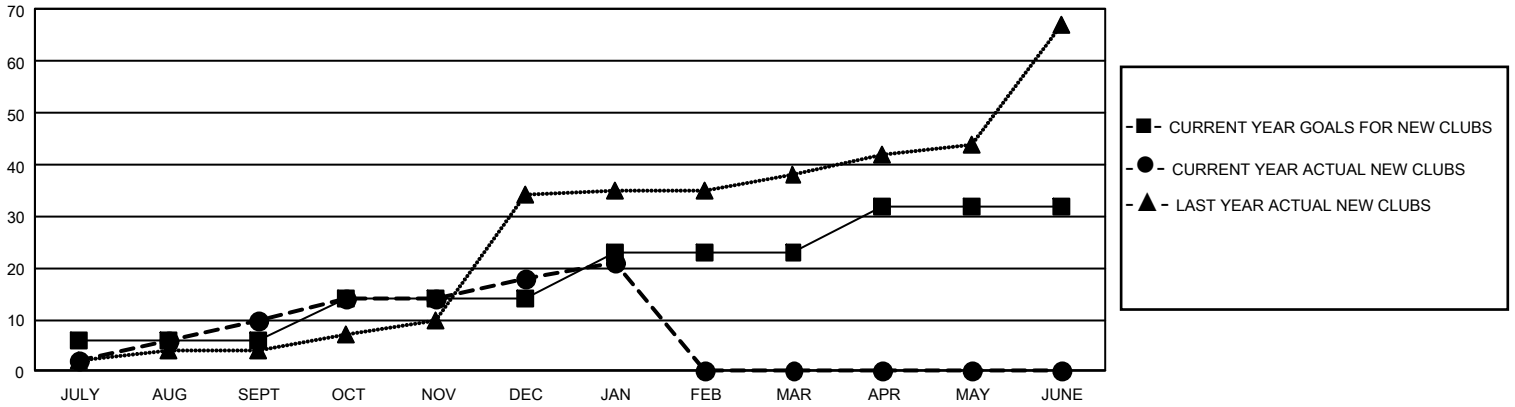
## GMT Constitutional Area 5 - E, Group O

REPORT DOES NOT INCLUDE CLUBS IN UNDISTRICTED AREAS.

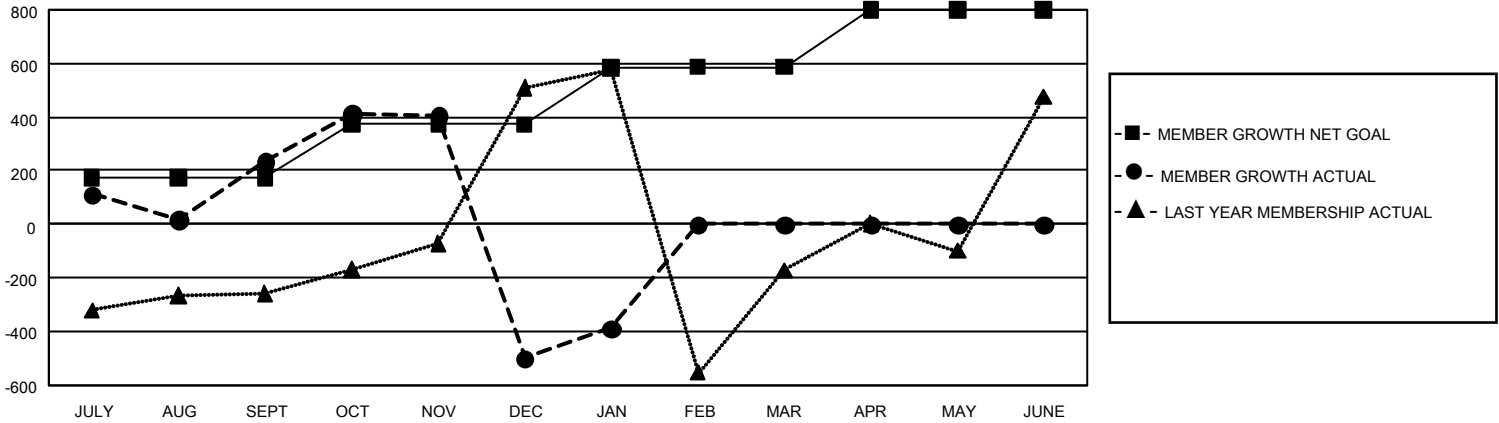
Clubs			
RESULTS FOR 2021-2022			
QUARTER	NEW CLUB GOAL	NEW CLUBS	DROPPED CLUBS
JULY/AUG/SEPT	18	10	16
OCT/NOV/DEC	24	8	37
JAN/FEB/MAR	27	3	3
APR/MAY/JUNE	27	0	0

Members			
RESULTS FOR 2021-2022			
QUARTER	MEMBER GROWTH NET GOAL	MEMBER GROWTH ACTUAL	DROPPED MEMBERS ACTUAL (including transfers)
JULY/AUG/SEPT	172	897	627
OCT/NOV/DEC	200	780	1,475
JAN/FEB/MAR	215	469	272
APR/MAY/JUNE	212	0	0

GOALS AND ACTUAL NEW CLUBS CUMULATIVE



GOALS AND ACTUAL MEMBERS CUMULATIVE



<b>DROPPED CLUBS: 56</b>	235 CLUBS OF 522 ADDED 1 OR MORE NEW MEMBERS	<b>GENDER DISTRIBUTION</b>	
		MALE 8,165 (49.23%) FEMALE 8,419 (50.76%) NON BINARY 0 (0.00%) PREFER NOT TO ANSWER 1 (0.01%)	
<b>DROPPED MEMBERS</b>		TOTAL FAMILY UNIT MEMBERS 6,504	
DECEASED 90 CLUB CANCELLED 1,222 OTHER 1,062 <b>TOTAL 2,374</b>	<a href="#">CLICK HERE FOR CUMULATIVE MEMBERSHIP DATA</a>	FAMILY MEMBERS PAYING HALF DUES 4,057	